

Welcome to Fayette, Alabama



The Fayette Area Chamber of Commerce and the City of Fayette welcome you to our community. We hope that through this publication you will warm to our community and spend some time getting to know us.

Fayette is located in west central Alabama, just 43 miles northwest of Tuscaloosa and 41 miles east of Columbus, Mississippi.

Our community boasts a strong workforce, friendly people, excellent schools, an art museum and theatre, and a beautiful park with walking trails, fishing lake and an aquatic center. This combination makes Fayette a great place to live, work, play, and raise a family.

The Fayette Area Chamber of Commerce was established in 1960 and has been active in the promotion and development of the community. Our goal is to lead and support the membership in realizing economic prosperity that improves the quality of life for Fayette citizens.

The Fayette Area Chamber of Commerce and the City of Fayette welcome you to our home.

A Great Place to Live

Located in northwest Alabama at the foothills of the Appalachian mountain range, Fayette enjoys a temperate climate, plenty of fresh air and clean water. The 100-acre Guthrie Smith Park, the Fayette Art Museum, and Fayette Civic Center are jewels of culture and recreation that make Fayette one of the best small towns in the state.

Bevill State Community College, an industrial park, DCH Fayette Medical Center, and our full service general aviation airport provide indisputable evidence of the quality of life that Fayette residents enjoy. These assets will continue to be utilized by all citizens now and into the future.

Fayette enjoys a strong economy based on productive agriculture with a healthy mixture of manufacturing and service industries. A strong workforce, convenient geographic location, affordable housing, and top ranked schools make Fayette a tremendous asset to the state of Alabama.

Fayette County has a rich history beginning in 1824 when a courthouse and a post office were built. In 1883, the railroad came to town. The depot was a mile south of the courthouse, which prompted many businesses to move close to the depot for convenience and activity.

By 1910, Fayette was a thriving community. The new courthouse, which bore a strong resemblance to a British castle, was located in the heart of town. From the courthouse, passersby could venture to the drug store, shop at Propst Brothers department store, eat a meal in the café, send a letter or telegram, rent a room at the Turner Hotel, and catch a train, all within a seven-block walk.

In 1910, a fire destroyed everything along Temple Avenue, which was the main street through town. Rebuilding began immediately and in 1912, the current courthouse was completed. The completion of the courthouse introduced a time of change and prosperity in the 1920s when many new buildings were constructed and the town was rebuilt.

Today's Depot was built in 1913 and stands as a historical tribute to Fayette's history. It is a museum with a wealth of exhibits and items from past businesses, prominent Fayette residents, railroad related items and historical artifacts dating back to the Civil War. In the center of the museum is a 10'x12' model of Temple Ave circa 1950s. It starts at the Depot and goes to the present Regions bank. The model has two trains. One is a steam engine like the one that served Fayette up until the 1950's. "Thomas", the second train, is for younger visitors. The Depot is open to the public on Sunday 2-5 PM.





Education

The Fayette County school systems boasts outstanding academic, music, and athletic programs. Approximately 2,650 children are served at six schools throughout the county. Alternative, early interventions, gifted, and career technical courses are available to all students.

All teachers are certified in their area of instruction and over 93 percent meet the No Child Left Behind definition of “highly qualified” teachers. Fayette County elementary schools provide reading instruction using the Alabama Initiative model. Scores on the standardized achievement tests ACT and SAT are at or above state and national norms.

Bevill State Community College, an outstanding two-year institution, offers associate degree and certificate programs. Extensive vocational and technical training is available at the College, as well as continuing education, and special incentives programs for senior citizens. Bevill also offers dual enrollment classes for the local schools in career tech courses as well as academic.



The Arts

The Fayette Art Museum began with a city ordinance to ship artwork donated by Lois Wilson and a vision from Jack Black, founder and Curator for over 30 years. Over a period of time, she offered her entire collection of over 2,500 pieces of art to build the Fayette Art Museum's permanent collection and others have followed her lead. Additional works housed in the museum include featured artwork by nationally known folk artists Jimmie Lee Sudduth, Bro. Benjamin Perkins, Jessi LaVon, Moses T., Fred Webster, and Sybil Gibson just to name a few. The collection has grown to over 5,000 pieces in its permanent collection.

Every second Saturday in September, the Fayette Art Museum hosts an arts festival which attracts over 125 artists from around the South.

It is known to be the longest-running consecutive festival in the state. Visitors are treated to a variety of food, live local entertainment and exhibits that range from fine and folk art to jewelry to pottery and crafts. The festival features "something for everyone." The festival has become a tourist attraction for neighboring cities and is a great way to end the summer for the Fayette community.



Healthcare



DCH Fayette Medical Center is one of the most progressive small hospitals in the southeast. The hospital is equipped with highly technological diagnostic equipment and a surgery department with a reputation for excellence. DCH Fayette Medical Center has been recognized nationally by Press Ganey and Associates as a “Top Ten Hospital in the Nation” in patient satisfaction and also named an “Employer of Choice” by a national polling organization. FMC is ranked “Top Performer” in quality care by VHA Southeast and is recognized by other independent agencies as a leader in patient experience, safety and quality.

Fayette Medical Center strives to remain ahead of the healthcare needs of the area. All facilities, including 61-bed hospital and the 122-bed skilled care long-term care facility are accredited by the Joint Commission and the State of Alabama Department of Public Health. As a member of the three-hospital DCH Health System, Fayette Medical Center has weekly access to a large variety of specialists supported by a strong base of local family practice physicians.



Fayette is also home to Air-Evac, an emergency air ambulance service, based at the Fayette airport to provide emergency services and transportation for Fayette and surrounding counties twenty-four hours a day, seven days a week.





Sports

From the Friday night lights of the high school football fields to the crack of the bat at park league baseball, passion runs deep in Fayette County for sports and recreation.

Opportunities are available for all ages, but none quite so popular as when the leaves of autumn begin to turn colors and signal the start of a new football season. With three high schools in the area, football is a highlight for the residents of Fayette County. Fayette High School, Berry High School, and Hubbertville High School all provide comprehensive athletic programs for their students from junior high through varsity levels.

Summer league baseball and softball is the most popular of the Fayette Park and Recreation's activities, which offers Dixie Youth League play for all ages of youngsters as well as adult softball leagues. The Park and Rec Association also offer youth basketball, soccer and football, and adult league basketball.



Religion



With more than 60 churches and houses of worship, residents have the ability to choose from a variety of different denominations and religious sects. Church-based activities are an important part of family life in the community.

In addition, several of Fayette's churches have been in the community for generations with architectural design dating back to the early 1920's making them points of historical interest for community visitors.



Senior Living

Fayette County offers many options for retirees. Beville State Community College offers a wellness center and adult education courses. The Fayette Aquatic Center offers water aerobics classes. Lunch, games, exercise classes and transportation are offered by the Fayette Community Center each day. Housing is readily available at all economic levels and Morningside Assisted Living Home is a beautiful facility with a wide range of services. There are also opportunities for volunteerism in the community, including the Fayette Medical Center.



Agriculture



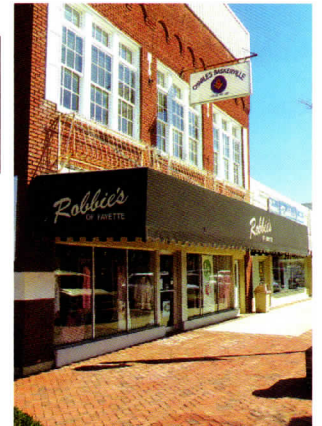
Beautiful Fayette County lies on a fault line, which means we have both upland and coastal plain soils. The county is crisscrossed with streams and rivers which allow for plenty of water and fertile land for growing agricultural products.



The county is agriculturally diverse. Nearly 80 percent of the land in Fayette County is forest. Accordingly, the forest industry provides our largest agricultural income, followed by livestock and poultry, cotton, corn, and soybeans. The county has approximately 75,000 acres used for agricultural production.

Business & Industry

Fayette County has the resources to provide the physical facilities, the productive workforce and the infrastructure system needed to support a wide range of industry. An industrial park, economic incentives and a welcoming community make Fayette an excellent location choice for both small and large businesses.



Special Events

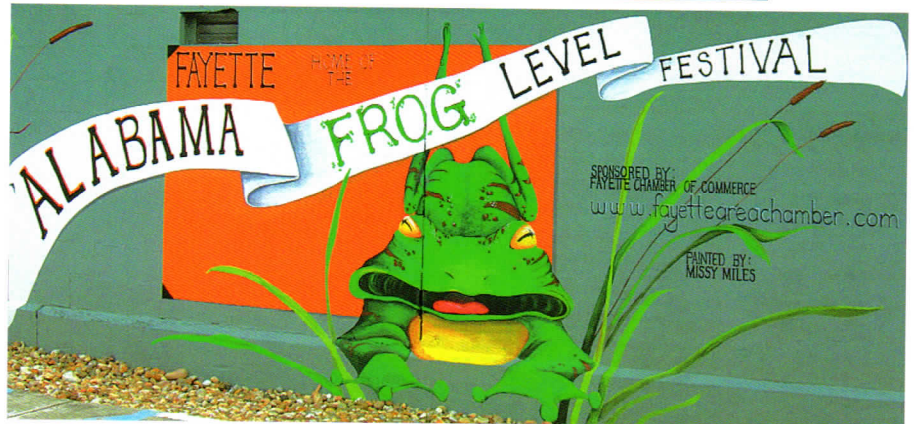
No matter the season, you can always find a reason to celebrate in Fayette. A full line-up of special events spans the calendar.

Throughout the year, the new arena hosts a variety of horse shows and competitions, rodeos, and agricultural events.

The summer starts a variety of events including Tunes on Temple and the opening of the Aquatic Center. Every summer, the Fayette Arts Museum and Fayette Community Foundation offer a free children's art camp at the museum. The annual Fayette Arts Festival occurs every second Saturday in September at Guthrie Smith Park.

The traditional Frog Level Festival occurs the first Friday and Saturday of October.

December wraps the calendar of events up with Festival of the Trees, Christmas at the park, and the annual Christmas parade.



Exploring Fayette County

The average household income in Fayette is just over \$44,000, with a median household income over \$33,000. The county houses an estimated 8,000 households. The unemployment rate in the county has improved greatly in the recent years, and generally shows a slight improvement over state and national scales.

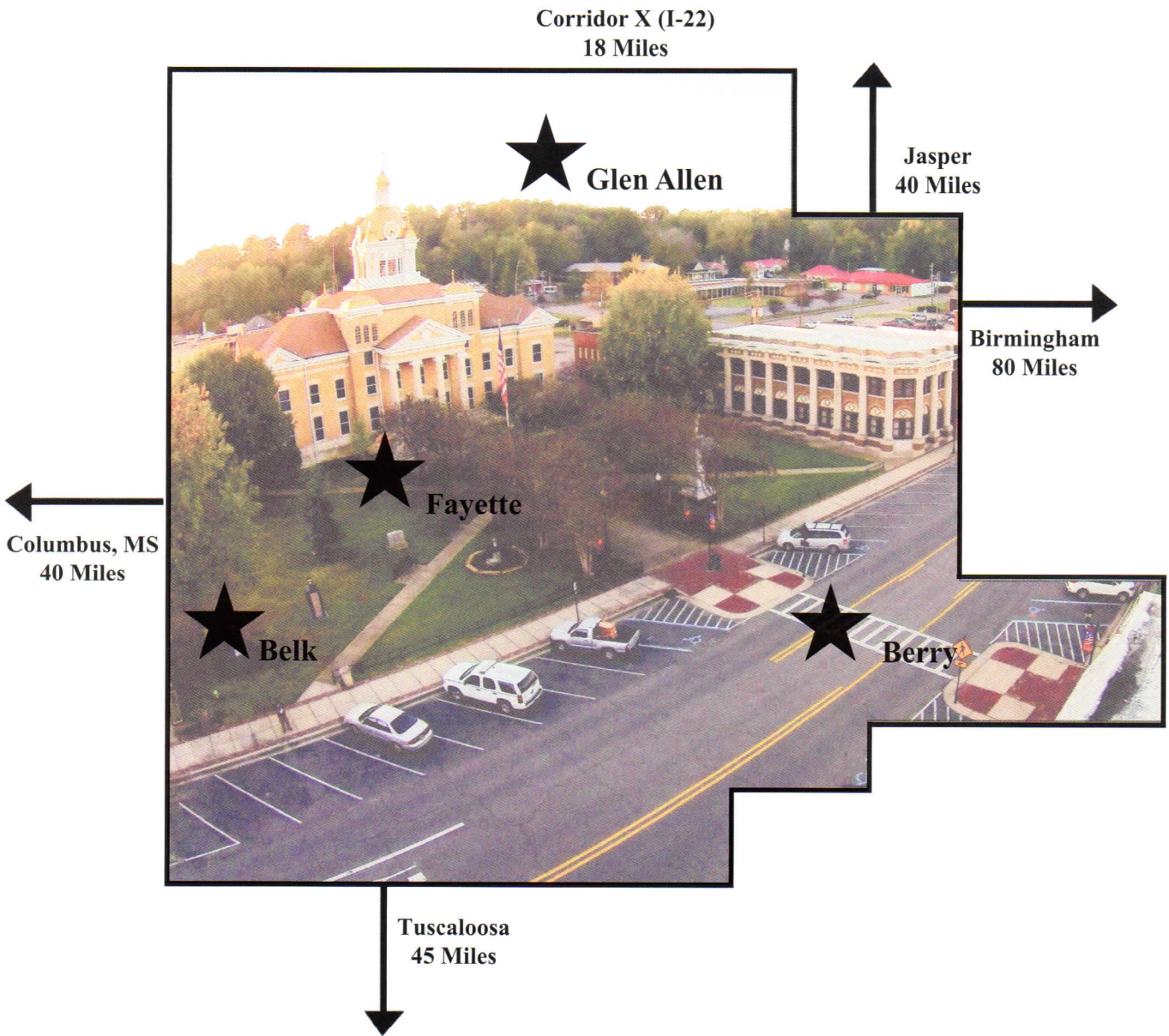
Fayette County contains 151 miles of state and federal highways, with U.S. Highway 43 and State Highways 171 and 13 providing the main thoroughfares through the county. The city of Fayette is also located just 15 minutes from Interstate 22 in Marion County. An additional 932 miles of county highway to provide the backbone of infrastructure for the residential areas in the county.



Fayette County is the picture of small-town life with a wonderful mix of cultural, recreational, and civic opportunities. An ideal setting for families, this hamlet of northwest Alabama is a safe and friendly environment for the visitor and the resident alike. The county has a population of over 17,000 including a population in the county seat of Fayette of 4,600.

Well positioned between the population centers of Tuscaloosa, Alabama, and Columbus, Mississippi, Fayette County provides many opportunities for activities of interest to all ages. Sixty percent of Fayette County residents make the county their place of work and home, with the remaining 40 percent driving a reasonable average of 28 minutes for their commute before returning home to one of America's best small towns.





Fayette County is comprised of four municipalities - Fayette, Berry, Belk and Glen Allen

Fayette is the county seat and has a population of 4,600 people.

The county has a total population of 18,000.



Copyrights of all photos belong to Carmalinda Farley, James Sanders, Nancy Reeves, Scott Gravlee and the Fayette County School Yearbook Staff